

FRANKING TYPE

Material

- Steel/non-ferrous metal

Condition

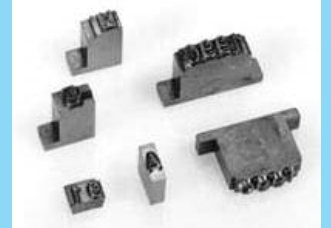
- Soft or hardening as required

We offer

- An extremely wide range of small type slugs to meet the most exacting field requirements
- Custom body styles

Applications

- Point of sale registers
- Post Office hand stamping equipment
- Letter franking machines
- Cheque cancelling machines



INDENTATION TYPE

Material

- Alloy Steel

Condition

- Hardened and flash plated

We offer

- Standard and custom body dimensions
- Wide varieties of characters
- Maximum hardness coupled with minimum embrittlement to ensure exceptionally long life
- Flat face or rounded type with variations in face width as required
- Ministress or matrix dot type

Applications

- Mechanical marking machines for indent marking of ferrous and non-ferrous materials
- Metal can marking
- Food packaging

